



STD

The BRITEX Stainless Steel Accessible Security Toilet Suite with Integrated Backrest and Seat is a robust yet stylish compact suite incorporating a vandal-resistant toilet pan and dual flush cistern case. Integrated backrest and seat allow the unit to be contraband-proof. This suite is designed for accessible users in correctional and detention facilities or applications requiring vandal-proof fixtures. A pressed internal bowl area with safety radius front edges and a unique trap design makes the pan durable and extremely water efficient. Being close-coupled, the suite is hygienic, highly resistant to vandalism and allows for ease of cleaning.

Features and Benefits

- Made from 304 Stainless Steel
- Integrated Toilet Backrest
- Robust construction
- Available with S or P trap
- Concealed fixings
- Unique blockage-resistant trap
- Integrated seat ensures compliance with AS1428.1
- Safety radius front edges
- Left and right access panels
- Option for permanently sealed access panels (Maximum Security Projects)
- Suits detention facilities and public amenities

Sample Spec

*Britex Stainless Steel Accessible Security Toilet Suite with Integrated Backrest - supplied with vandal resistant toilet pan, dual button cistern case and integrated backrest, with **mechanical** flushing and **P trap** - Product Code STD-M-P*

***RED TEXT** may denote a **variable** where one option only is to be selected, a **nominal dimension** that needs to be specified, or an **optional feature** that can be removed if not required. Please refer to the back of this page for additional specification details and options.

HOW TO SPECIFY: Security Accessible Toilet Suite with Integrated Backrest and Seat

Sample Specification Code

A B C
STD - E - S

= Security Accessible Toilet Suite with
Electronic Flushing and S Trap

Specification Key

A = Product Code

B = Flushing

C = Trap Type

STD: No Flushing

STD-E: Electronic

STD-M: Mechanical

STD-FIW: Pneumatic

P: P Trap

S: S Trap

Flushing



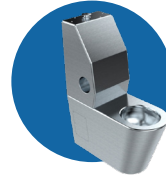
STD (Base)
No Flushing

Base model. This model is selected when there is an existing flushing system in place that will connect to the unit or should the client have a flushing system of their own that they wish to adapt.



STD-E (Electronic)
Electronic Piezo Flushing

Electronic Piezo Flushing at top section of the toilet. Half flush and full flush etching is provided as well as blue rings to meet the luminance contrast. Flush capacity is configurable and are adjustable.



STD-M (Mechanical)
Mechanical Internal Cistern

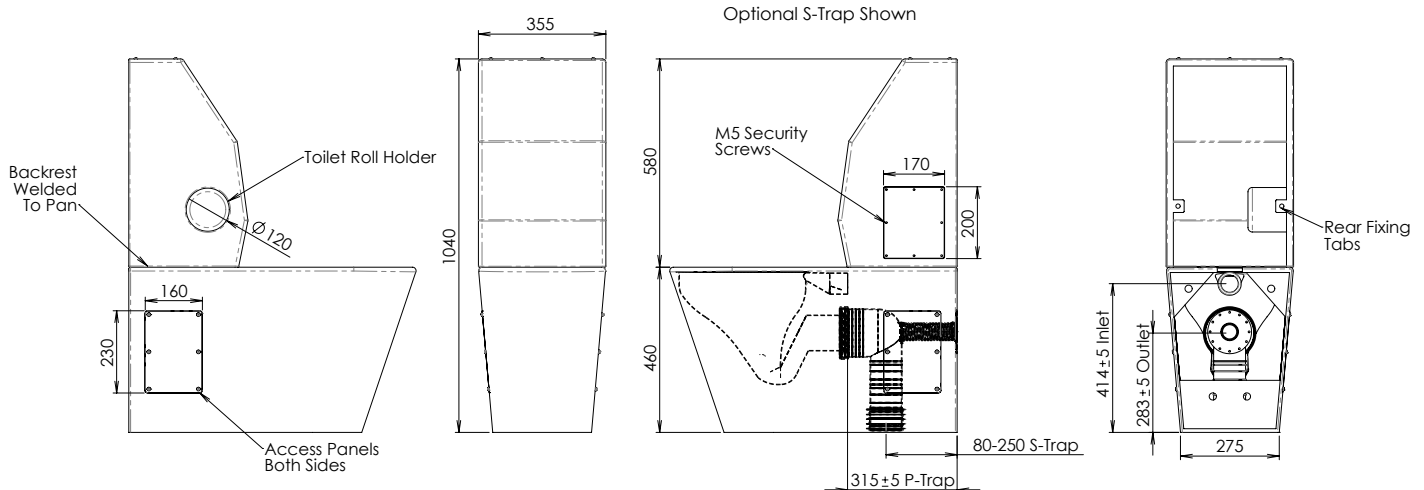
This unit has a mechanical internal cistern complete with AS1428 Compliant Chrome Plated Half flush/ Full flush Metal Mechanical Button(s). The cistern and all other components are housed within the confines of the unit. This unit is typically selected when a rear service void is not available.



STD-FIW (Pneumatic)
Separate In Wall Cistern
*WELS Rated

This unit is supplied with a separate In Wall cistern that would typically be located in the rear service void. The single Chrome Plated Metal activation button can either be raised or low profile to suit application. An air hose will then run back through the wall and connect to the cistern located in the rear service void.

MODEL STD Side, Front, Rear and Rear View



VISIT BRITEX.COM.AU TO DOWNLOAD BIM FILES, CAD DRAWINGS AND THE MOST CURRENT PRODUCT LITERATURE.

Last Revised 25 Nov 2024 | C