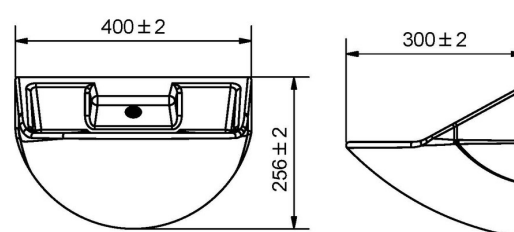


Wallgate Anti-Ligature, Anti-Vandal Solid Surface Basin with Single Outlet 0TH

Product Code: WHB-201W-NB-AUS



Our range of Wallgate anti-ligature, anti-vandal solid surface basins are available in a range of sizes with various activation and outlet options. All are made as one piece and from the highest grade solid surface material.

Wallgate is the market leader and specialist in the design and manufacture of robust, innovative and efficient washrooms and sanitaryware solutions, ideal for the Health, Mental Health, Dementia and Corrections sector.

Anti-ligature, robust solid surface basin with a single outlet and infra-red activation.

Features

- Anti-ligature design
- Electronic activation option available
- Highly robust
- Made as one piece without joins
- Highly polished finish for ease of cleaning
- Easily renewable surface without a gel coat layer
- Normalises the environment
- Range of control options available
- Concealed through-wall services and fixings
- Assists in the prevention of self-harm
- Retains appearance over long life
- Rear fixed installation

Technical Information

- WELS: 6 Star Rating (4.5L/min)
- Nominal Flow Rate (LPM): 4.1
- WaterMark: AS/NZS 3718 Lic. 023196
- Finish: Solid Surface

Applications

- Safe-Cell Environments
- Prisons
- Secure Health Environments
- Mental Health
- Police & Remand Centres
- Public Washrooms and Areas prone to Vandalism

Note: Not compatible with anti-ligature basin waste grilles.

This item may require additional components such as WDC water management controls, solenoid packs, or accessories for full functionality—each project varies, and our technical sales team is available for consultation to ensure correct specification.



Environmental Sustainability

We are ISO 14001 certified and take sustainability seriously. Our products are environmentally responsible designed to be healthier for users, save water and/or energy, and minimise carbon footprint. Our target is to reduce our carbon footprint by 25%, and the use of non-recyclable/non-compostable materials across the company (e.g. plastics) by 50%.

Warranty

Galvin Engineering products are covered under our Manufacturer's Warranty. Galvin Engineering products must be installed in accordance with the installation instructions and in accordance with AS 3500 and NCC Volume Three, relevant Australian Standards and local authorities applicable to product being installed. Water and electrical supply conditions must also comply to the applicable national and/or state standards, failing to comply with these provisions may void the product warranty and affect performance of the product.

Please visit www.galvinengineering.com.au to view the full warranty, our Installation Compliance and Maintenance & Cleaning information as well as any other additional information.

While all reasonable care has been taken in compiling the information in this document, the designs, dimensions and products shown are indicative only and should not be relied upon without our prior approval. Due to our policy of continuous development, we reserve the right to alter any details of specifications or products without notice. All information, drawings, technical specifications and product designs remain the property of Galvin Engineering Pty Ltd.

In the absence of a legal or industry definition of anti-ligature or ligature resistant products, when we use these terms, we are referring to products that are designed and manufactured with the intention of reducing the risk of ligature attachment to the product(s). Galvin Engineering Pty Ltd will always endeavour to design and test our anti-ligature product(s) to reduce the risk of product ligature attachment that may result in serious injury or death. Whilst all reasonable measures are taken at the time of design, the anti-ligature design of the products are not intended to and will not:

- a. Replace protective measures that need to be taken in the specific circumstances of usage;
- b. Substitute the need for supervision of those who may be at risk;
- c. Protect and or prevent those at risk against any self-harm instances that may occur when installed; and
- d. Protect and or prevent injury when the risks where unknown to us at the time of the design of the product(s).

Galvin Engineering Pty Ltd does not offer and does not represent or warrant that any product(s) for sale are ligature-free. Therefore, Galvin Engineering will not be liable for any claims, loss, or damages arising from ligature attachment on our products. It is the purchaser's responsibility to ensure that products purchased and installed are suitable for the environments in which they are installed, and suitable supervision and protective measures are in place to protect those at risk.

Within Australia: 1300 514 074
Outside Australia: P: +61 (0)8 9338 2344
sales@galvinengineering.com.au
www.galvinengineering.com.au



A family
owned
Australian
business

